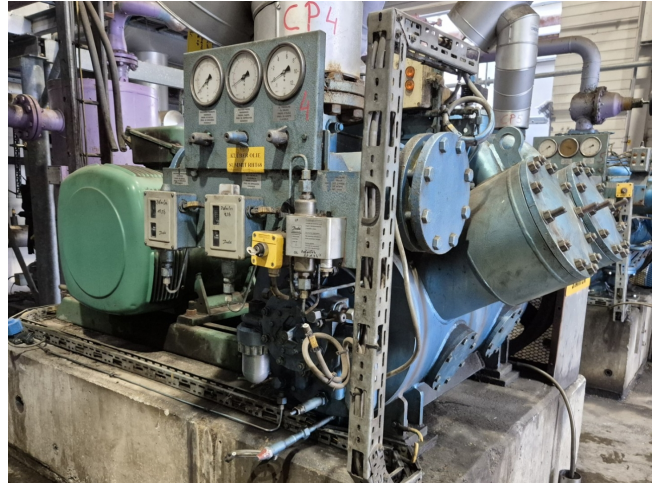


Grasso RC 612

Specifications

Marka	Grasso
Typ	RC 612
Czynnik chłodzący	NH 3 (ammonia)
kW at 0°C/+40°C	675,0
Rozładunek	✓
Kontrolka wydajności	✓
Podstawa na stalowej ramie	✓
Ciśnieniowe przełączniki bezpieczeństwa	✓
Wskaźniki ciśnienia	✓
Separator oleju	✓
Okno widokowe	✓
m ³ / h	798,0
Stock	1



Description

Used Grasso RC 612

Used Grasso RC 612 single-stage reciprocating compressor on NH₃ (R717). Complete with a Leroy Somer PLS315S-T electric motor - 50/60 Hz - 160/184 kW - 1463/1470 RPM, Grasso OS 6 oil separator, pressure and safety switches/gauges. The compressor has a displacement of 798 m³/h.

*Why choose for HOSBV? We are not only the largest used refrigeration specialist in Europe, but also, we deliver all equipment including an extensive test, warranty and an industrial cleaning. *Optionally we can also perform a new paint job and arrange the logistics.

